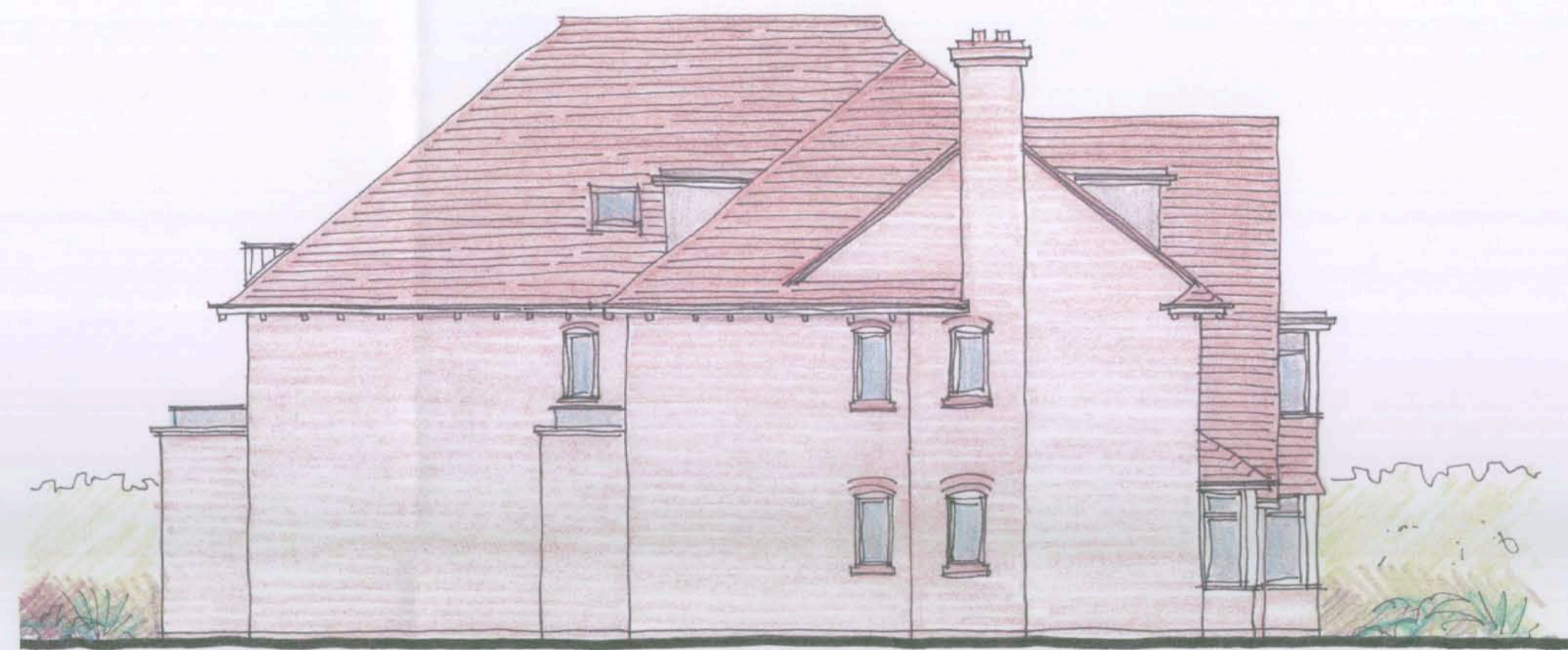


Revisions
A - 27.05.09 - Flat 2 Bedroom 1 & Flat 7 balcony

General Notes
External facing materials :
Walls generally orange/red clay facing brick.
Waney edge oak boarding to spandrel panels in gable and porch.
Clay plain tile roof and spandrel panel to bay window.



South Elevation, facing Talbot Avenue



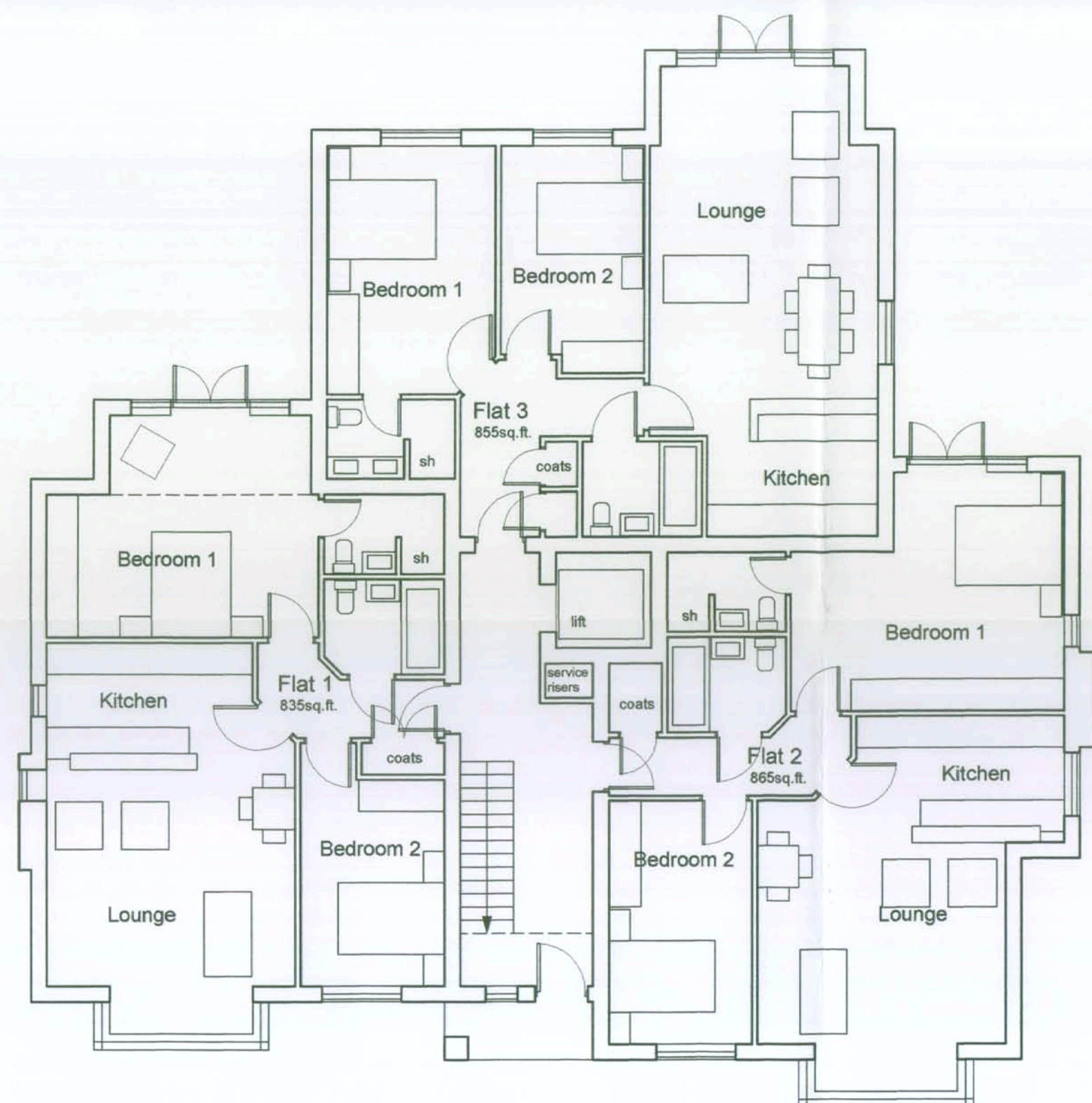
West Elevation, facing 32a Talbot Avenue



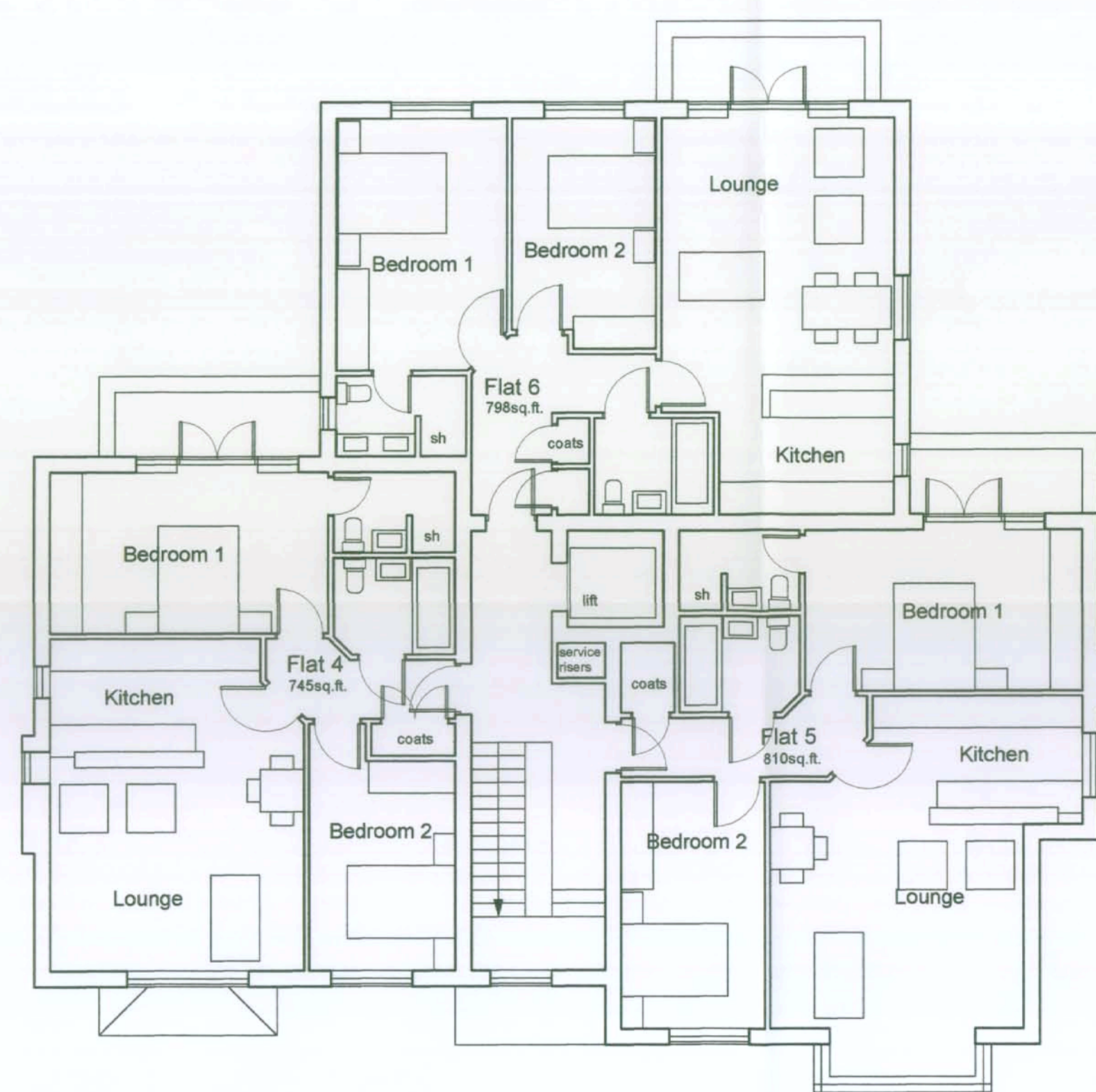
North Elevation, facing garden



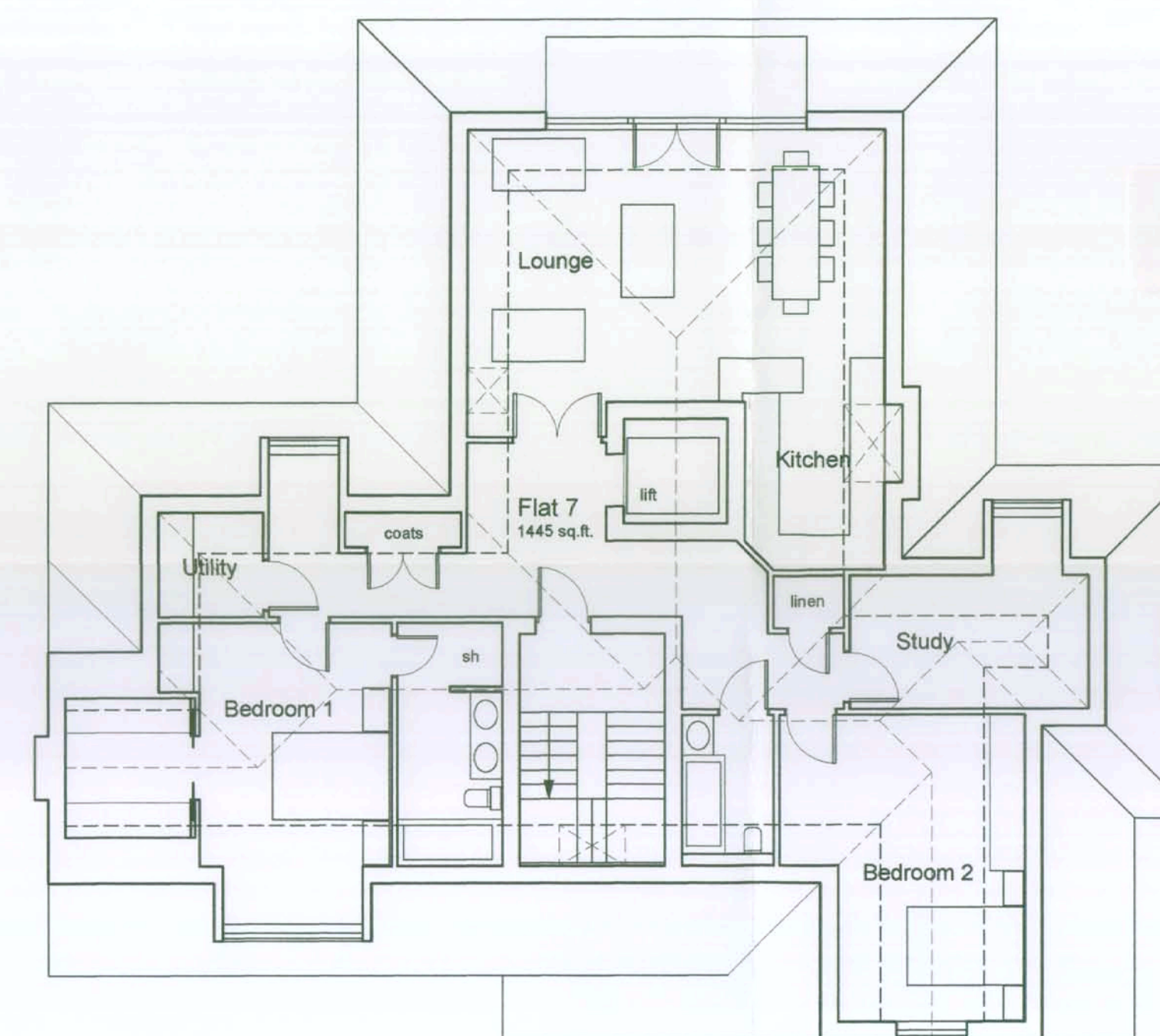
East Elevation, facing 2 Berkeley Road



Ground Floor Plan



First Floor Plan



Second Floor Plan

29 June 2009
CONSULTATION
7-2009-6612-C
30 Talbot Avenue.

Note:
Do not scale from this drawing. The contractor is to check all dimensions on site.

Residential Development
30 Talbot Avenue
Bournemouth Dorset

for
Positive Group

Drawing 2009-06-03
Floor Plans & Elevations
27 May 2009
Scale 1:100

Evans & Traves
Architecture and Town Planning

Evans & Traves LLP
Architecture and Town Planning Consultancy
8 Devildens Road
Vernwood
Dorset, BH31 6PL
t 01202 626219
e evans.traves@btinternet.com